

# CLEANFIX TW 411

## Contents

PDF created on: 10.11.2023 19:20



TW 411

Saugset

Tuyau d'aspiration set

Suction set

**B 5 / ST 5**

Deckel-Gehäuse

Capot-Bâti

Cover-Housing

**B 1 / ST 1**

Saugmotor-Pumpe

Moteur d'aspiration-Pompe

Vacuum motor-Pump

**B 2 / ST 2**

Einbau Saugmotor-Pumpe

und Netzleitung

Montage de la moteur

d'aspiration-pompe et

Cable d'alimentation

Pump assembling-vacuum motor

and Electrical connection

**B 4 / ST 4**

NDSX-Pumpe

Pompe-NDSX-

Pump-NDSX

**B 3 / ST 3**

Saugset

Tuyau d'aspiration set

Suction set

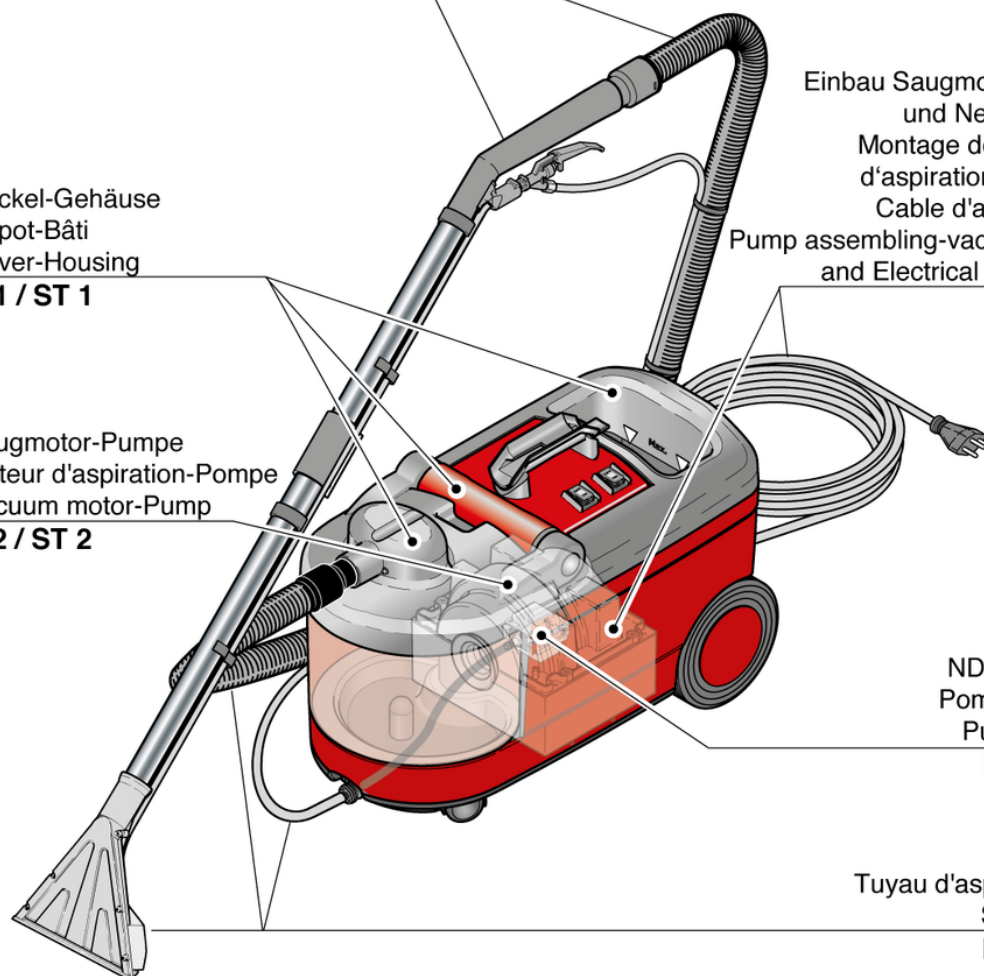
**B 5 / ST 5**

Stromlaufplan

Diagramme électrique

Wiring diagram

**B 6 / ST 6**



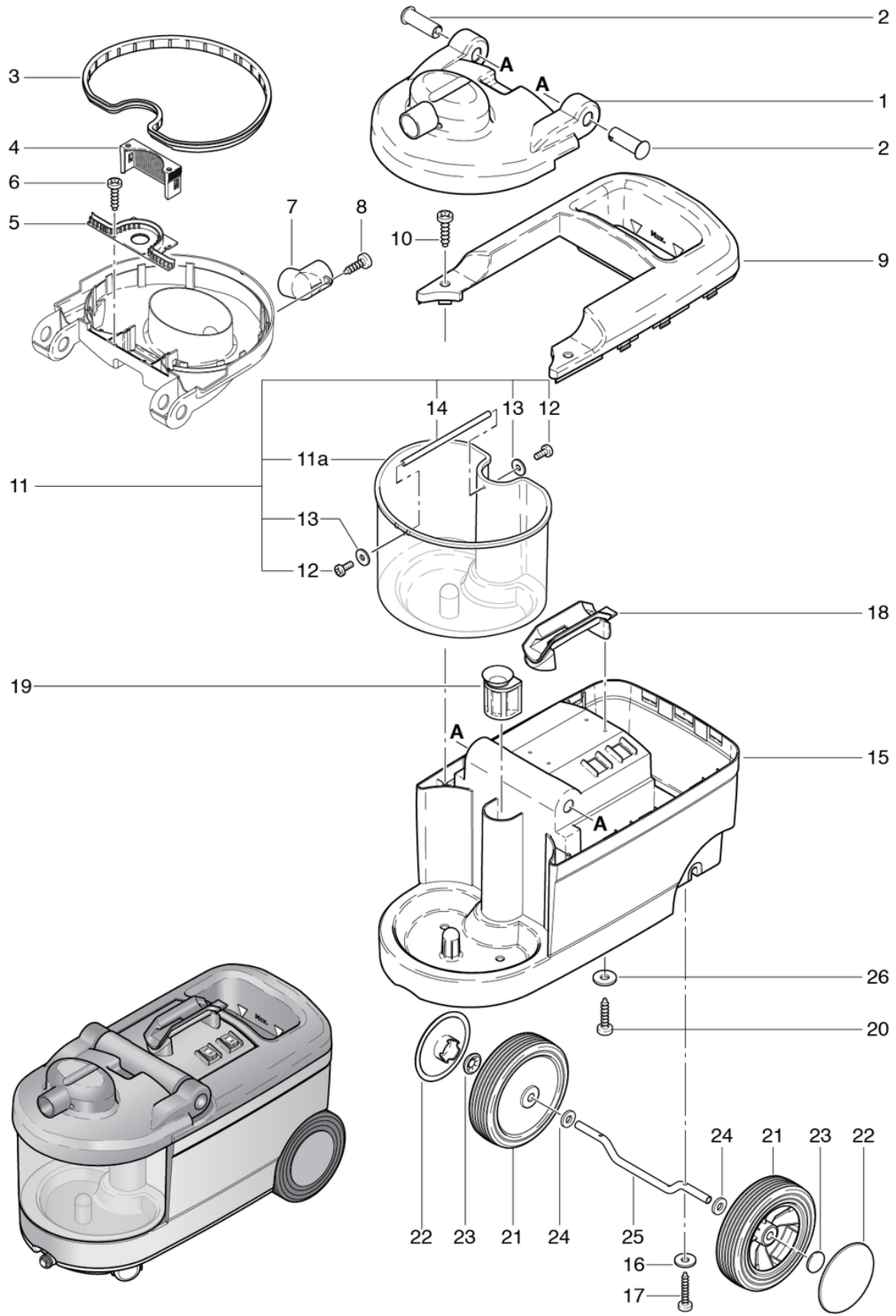
# CLEANFIX TW 411

## Cover-Housing

PDF created on: 10.11.2023 19:20



TW 411 / TW 412



<b>Pos.</b>	<b>Item no.</b>	<b>Spare part</b>
1	043.201	Cover antracite grey
2	043.504	Hinge Pin
3	043.202	Cover seal
4	043.205	Filter
5	043.204	Cover employment
6	P516F	Screw WN 1451 K30 x 16
7	043.207	Socket natural transparent 45mm machined
8	P516A	Screw WN 1452 K30 x 10 A2
9	043.502	Top Cover
10	P516G	Screw WN 1451 K40 x 16
11a	043.301	Recovery Tank
11	043.300	Recovery tank
12	P475B	Screw DIN 85 A M3 x 12
13	P497J	Shim DIN 9021 M3 3,2/9/0,8
14	043.302	Wave
15	043.510	Housing TW411 / 412 red
16	P497C	Washer DIN 9021-A M4 4,3/12/1 A2
17	P516O	Screw WN 1452 K40 x 25
18	043.503	Handle
19	043.505	Intake socket
20	P515X	Screw WN 1452 K40 x 20
21	380.135	Wheel TW383
22	300.242C	Hubcap 180-88 / 150-94 anthracite gray
23	P499LB	Ring Starlock NW 12 A2 without cap
24	P510P	Shim DIN 522 M12 13/28/4
25	043.501	Axle
26	P496G	Shim DIN 9021 M5 5,3/15/1,2

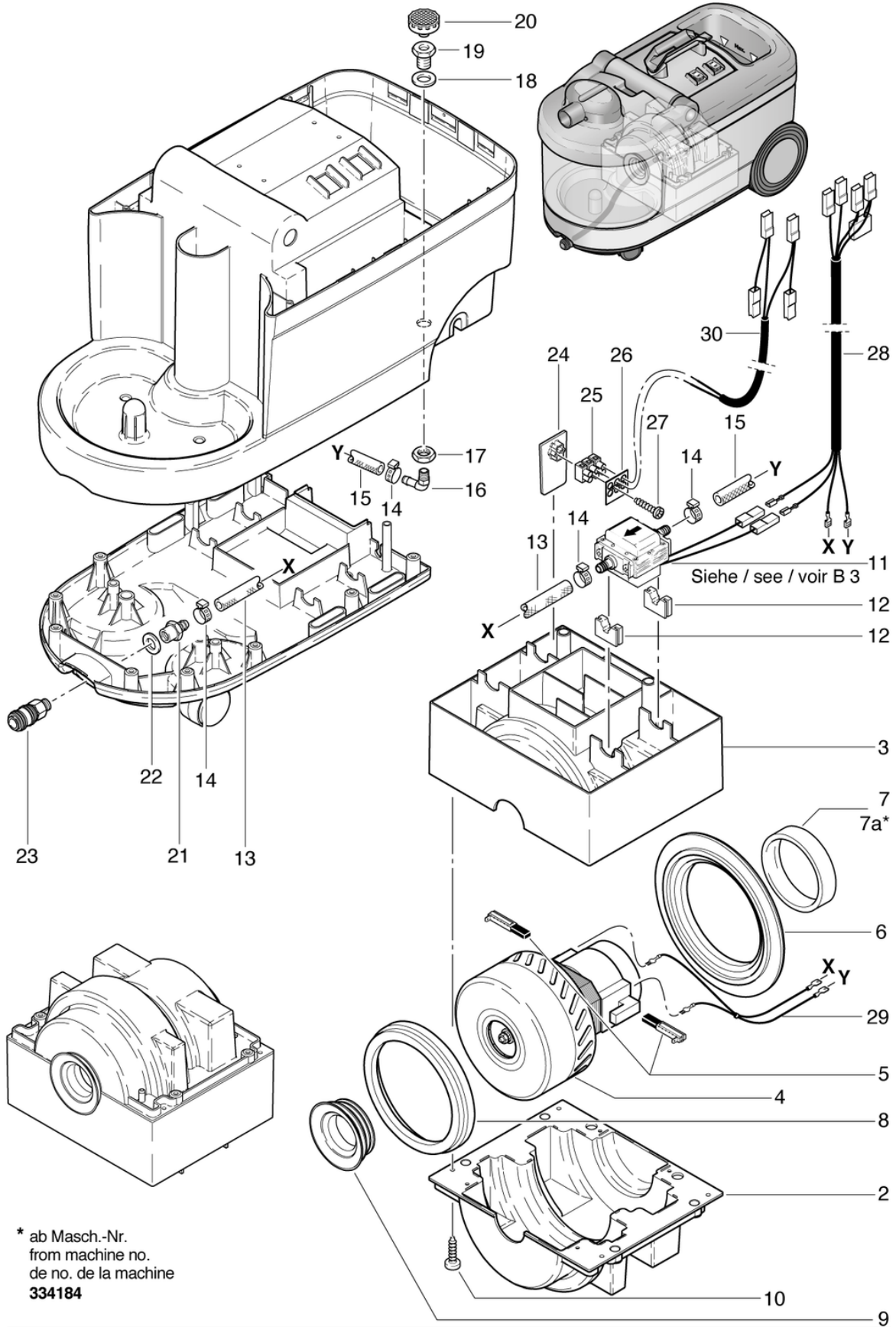
# CLEANFIX TW 411

## Vacuum motor-Pump

PDF created on: 10.11.2023 19:20



TW 411



\* ab Masch.-Nr.  
from machine no.  
de no. de la machine  
**334184**

<b>Pos.</b>	<b>Item no.</b>	<b>Spare part</b>
2	043.602	Lower motor shell
3	043.601	Upper motor shell
4	P876	Suction motor 230V/50 Hz, 1000W
5	P876KB	Carbon brushes (pair)
6	043.606	Sealing ring $\varnothing$ 190 / 124 x 23.5
7a	043.604	Motor gasket $\varnothing$ 80 x 6 x10.25
7	043.607	Motor seal $\varnothing$ 80 x 6 x 20.5
8	P971G	Turbine seal blue
9	043.605	Seal
10	P515Z	Screw WN 1452 K50 x 16
11	P809	NDS-X Pump 220-240V/50Hz
12	043.603	Pump holder
13	043.609	Hose pump - coupling
14	P550B	Hose clamp 15.7-706R
15	043.610	Hose tank - pump
16	P541H	Elbow nipple WES 8 / R1 / 4
17	P535B	Nut 3/8 Ms
18	P097	Sealing shim 30/17/2 PE
19	P535E	Hollow nipple 3/8 - 1/4 x 16 Ms
20	P106	Fresh water filter ND
21	P525K	Hose nipple NW8-1 / 4 Ms
22	P496A	Washer DIN 522 M12 13/30/1,6
23	P500B	Quick coupling 1/4 AG, large brass
24	043.608	Holder
25	P383A	Screw terminal with DS 3-pol. 2.5mm <sup>2</sup>
26	P390	Marking plate
27	P516F	Screw WN 1451 K30 x 16
28	043.612	Cable harness TW411
29	043.613	Cable harness motor
30	043.614	Braid garnitur

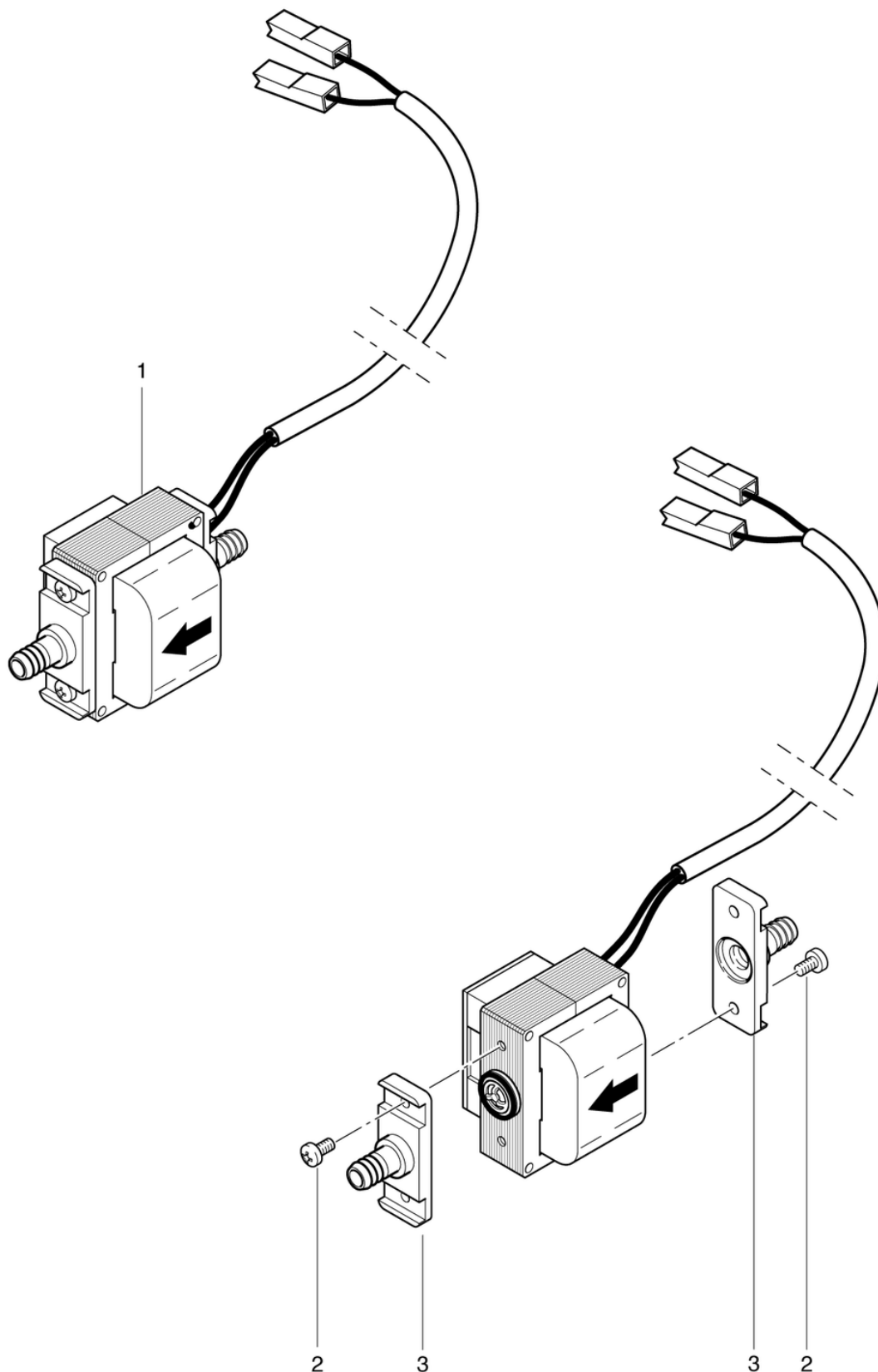
# CLEANFIX TW 411

## Pump-NDSX

PDF created on: 10.11.2023 19:20



TW 411 / TW 412



<b>Pos.</b>	<b>Item no.</b>	<b>Spare part</b>
1	P809	NDS-X Pump 220-240V/50Hz
2	P481M	Screw DIN 7985 M4 x 10 A2
3	P809M	Connecting even

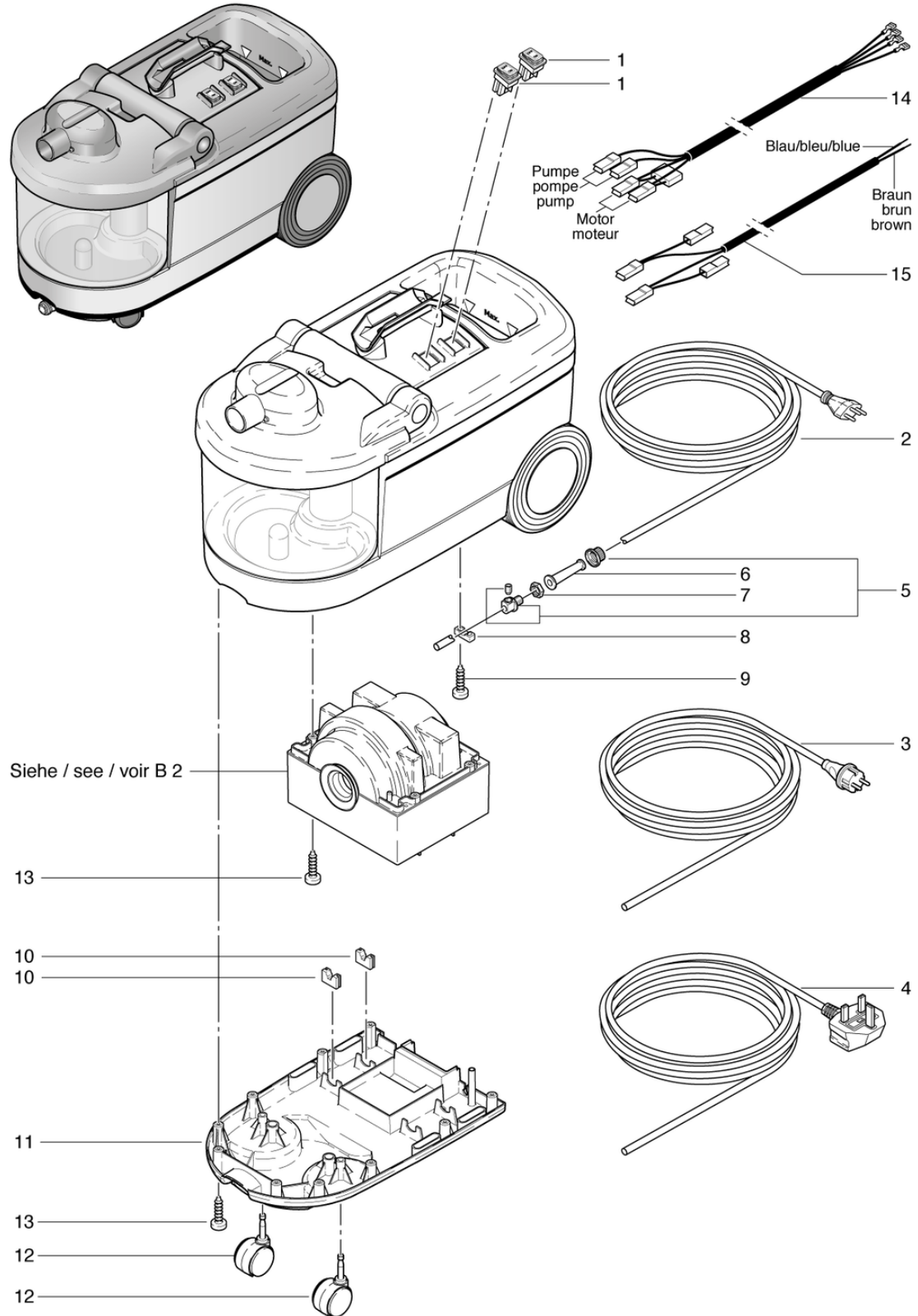
# CLEANFIX TW 411

## Pump assembling-vacuum motor and Electrical connection

PDF created on: 10.11.2023 19:20



TW 411 / TW 412





<b>Pos.</b>	<b>Item no.</b>	<b>Spare part</b>
1	P240	Rocker switch orange 230V
2	P287	Main cable SEV 2 x 0,75mm <sup>2</sup> , 7,5m
3	P288	Mains cable VDE 2 x 0.75mm <sup>2</sup> , 7.5m
4	P277	0mm <sup>2</sup>
5	P279	2-part strain relief clamp
6	P280	Cable grommet
7	P279H	Lock nut PG9 brass nickel-plated
8	4611085	Cable Clamp
9	P516G	Screw WN 1451 K40 x 16
10	043.603	Pump holder
11	043.401	Anthracite gray bottom
12	P204F	Castor ø50mm
13	P515Z	Screw WN 1452 K50 x 16
14	043.612	Cable harness TW411
15	043.614	Braid garnitur

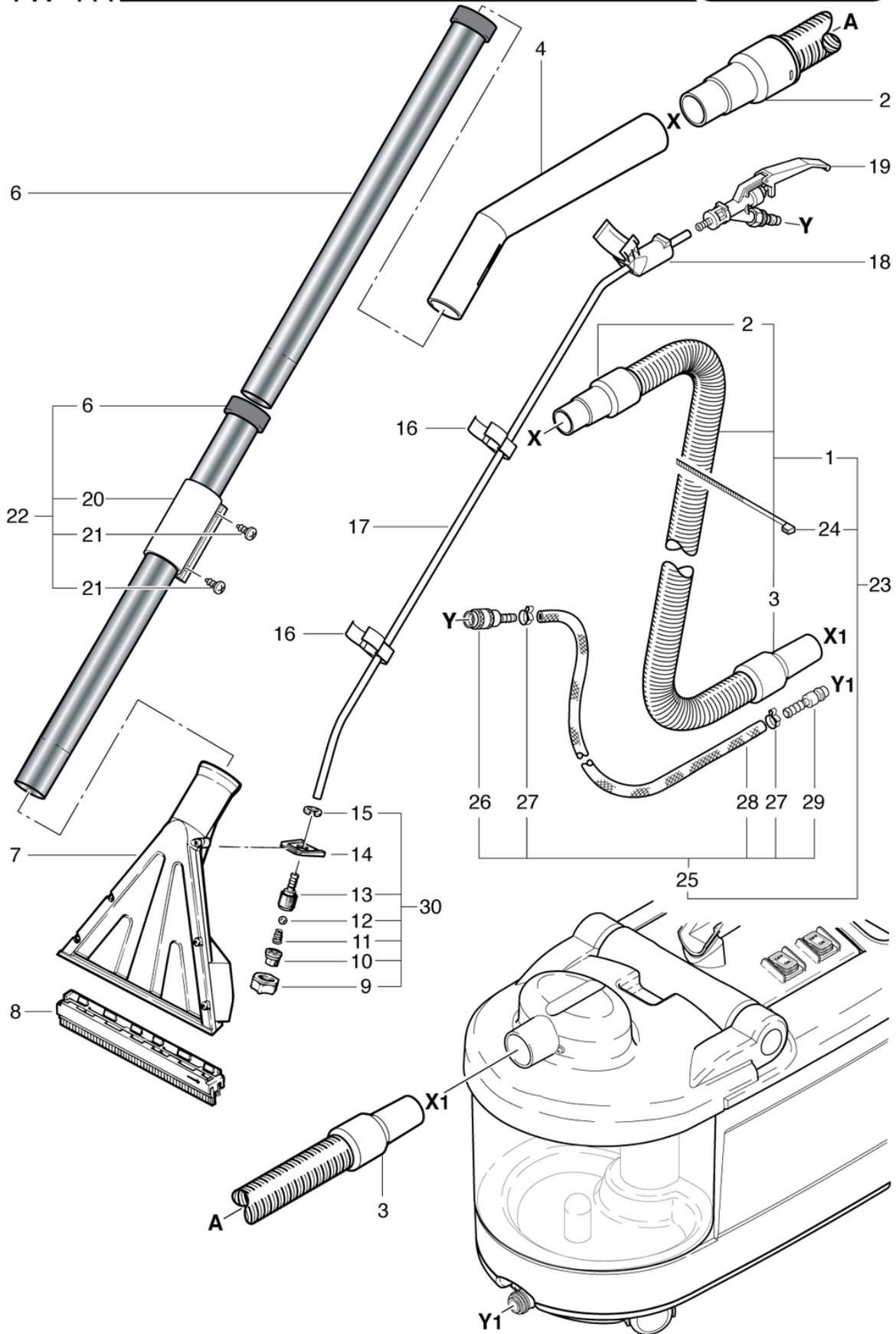
# CLEANFIX TW 411

## Suction set

PDF created on: 10.11.2023 19:20



TW 411



<b>Pos.</b>	<b>Item no.</b>	<b>Spare part</b>
1	043.561	2.2m suction hose
2	P575	Connection sleeve 32
3	P562C	Sleeve 32mm (screwable)
4	606.010	Tool Handle
6	645.002A	Inox tube
7	P600I	Suction nozzle 23cm transparent
8	P600W	Hard floor tool for nozzle 23cm
9	P602D	Union nut 3/8
10	P602C	Spray nozzle white
11	P444E	Compression spring 0.5/10.1;7/12
12	P172W	Ball ø7.14 for spray nozzle PA6.6
13	P602E	Nozzle holder
14	P602I	Nozzle holder
15	P499N	Shim DIN 6799 9/18,8/1,1 A2
16	P670	Holding clasp
17	P665	Sprinkler hose PUR 6/8 x 1085mm
18	606.020	Trigger Mounting Bracket
19	900.681	Trigger
20	012.411	Sliding clamp
21	P515W	Screw WN 1451 K40 x 8
22	645.003	Inox tube with clip
23	043.560	Spray and suction hose complete 2,2m
24	P609	Cable tie black 4,8 x 178mm
25	043.562	Spray hose 2.2m
26	900.165	Quick Connector TW401
27	P550I	Hose clamp 13.3-706R
28	043.563	Hose ø 6 / 12 x 2.25m
29	P501D	Plug nipple ø12 x 46mm
30	606.501	Spray nozzle set cpl.

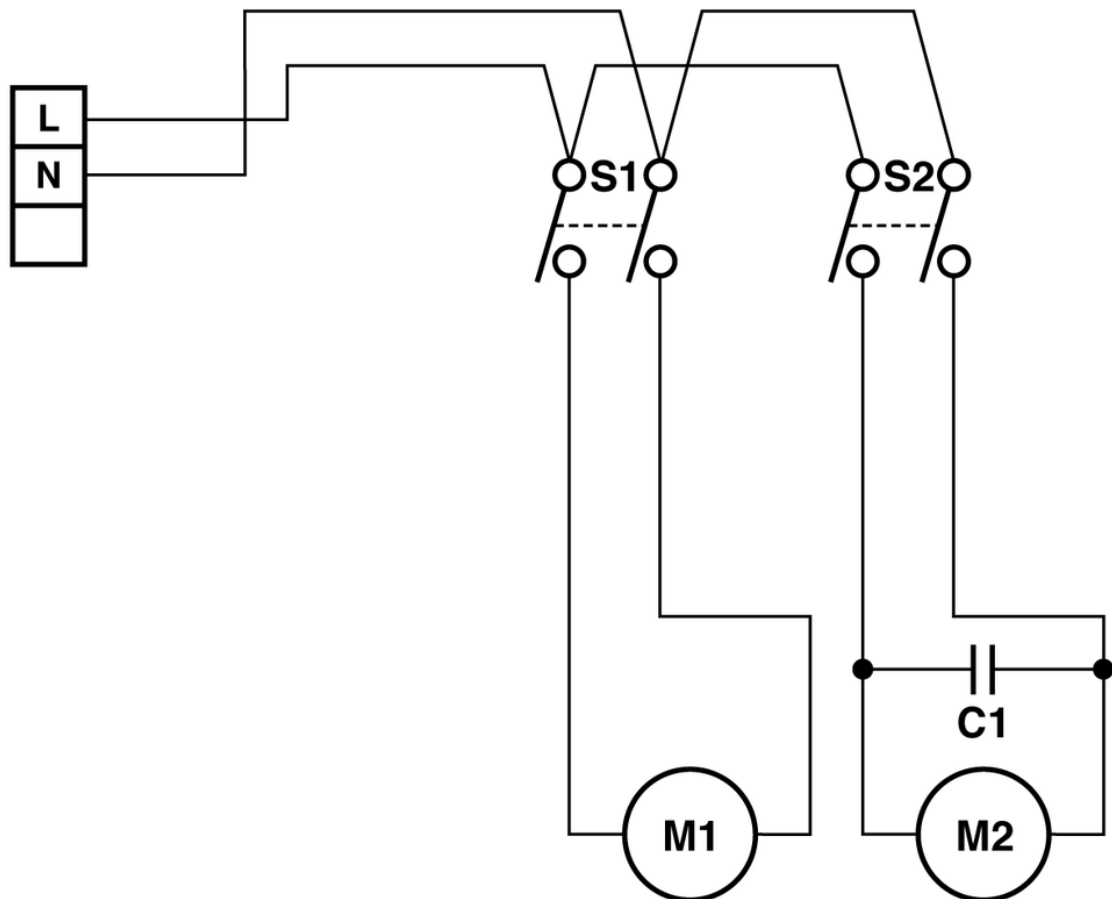
# CLEANFIX TW 411

## Wiring diagram

PDF created on: 10.11.2023 19:20



TW 411



- S1 = Wippenschalter 230 V 1 / Interrupteur 230 V 1 / Valve-switch 230 V 1
- S2 = Wippenschalter 230 V 2 / Interrupteur 230 V 2 / Valve-switch 230 V 2
- C1 = Entstörkondensator 0,15 uF / Condensateur 0,15 uF / Capacitor 0,15 uF
- M1 = NDS-X-Pumpe 230 V / Pompe NDS-X-230 V / NDS-X-pump 230 V
- M2 = Saugmotor / Motuer d'aspiration / Vacuum motor