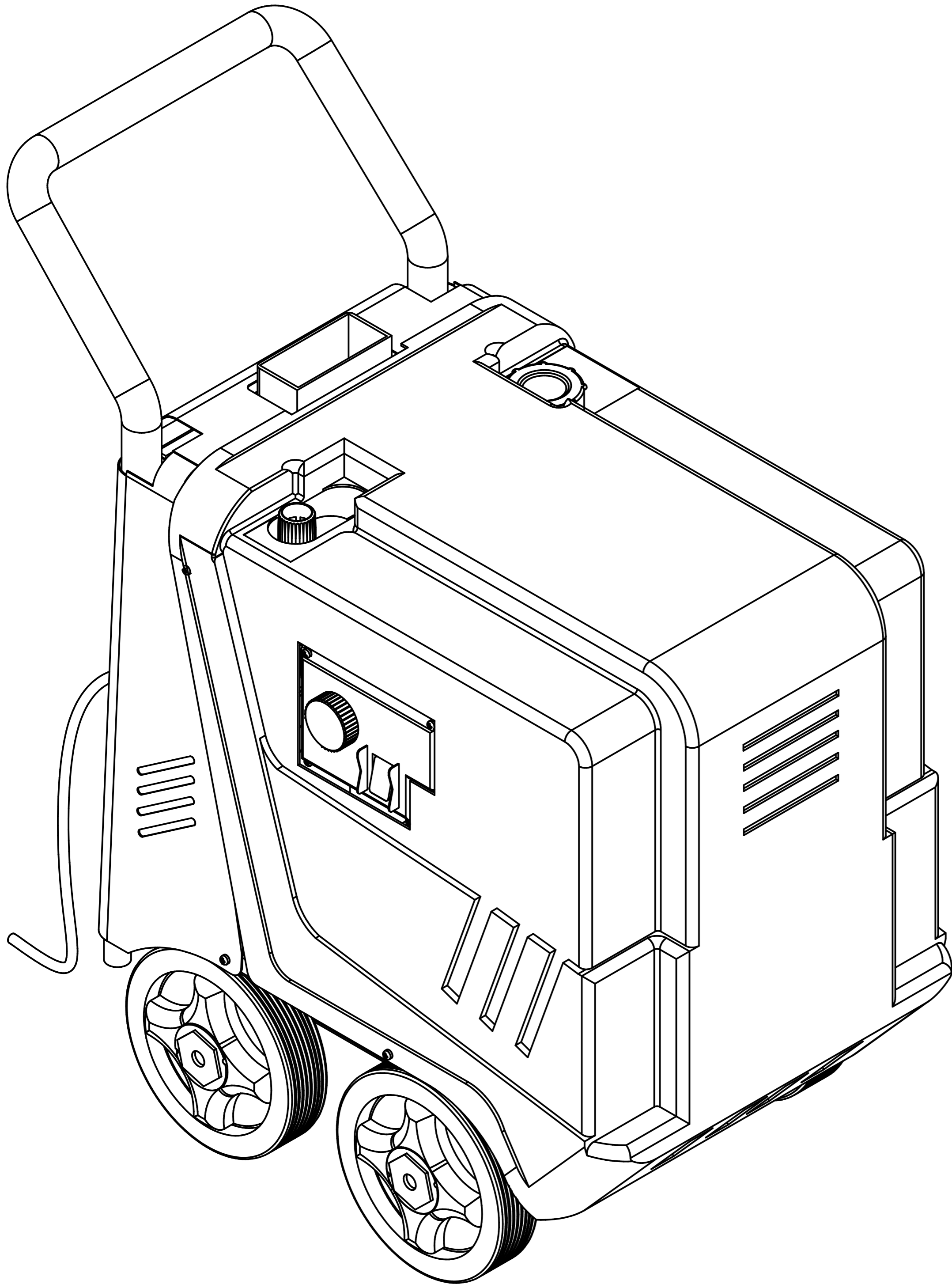


# ZETA EXPLODED DIAGRAMS



MODEL	CODE	DESCRIPTION
ZETA 100/8	20.07.00100	2,2 kW 230V 1~ 50Hz
ZETA 120/7	20.07.00600	2,2 kW 230V 1~ 50Hz
ZETA 110/8	20.07.00210	2,2 kW 220V 1~ 60Hz
ZETA 90/8	20.07.00200	2,2 kW 110V 1~ 60Hz
ZETA 120.7 STEAM	20.07.10600	2,2 kW 230V 1~ 50Hz

 **idromatic** S.R.L.

Via F. Petrarca Borgoforte, 127 - 46034  
BORG VIRGLIO (MN) - Italy  
p.iva e cod. fiscale: 02096330200  
info@idromatic.it - www.idromatic.it  
tel. +39 0376 648756 - fax. +39 0376 649140

FIG. 1

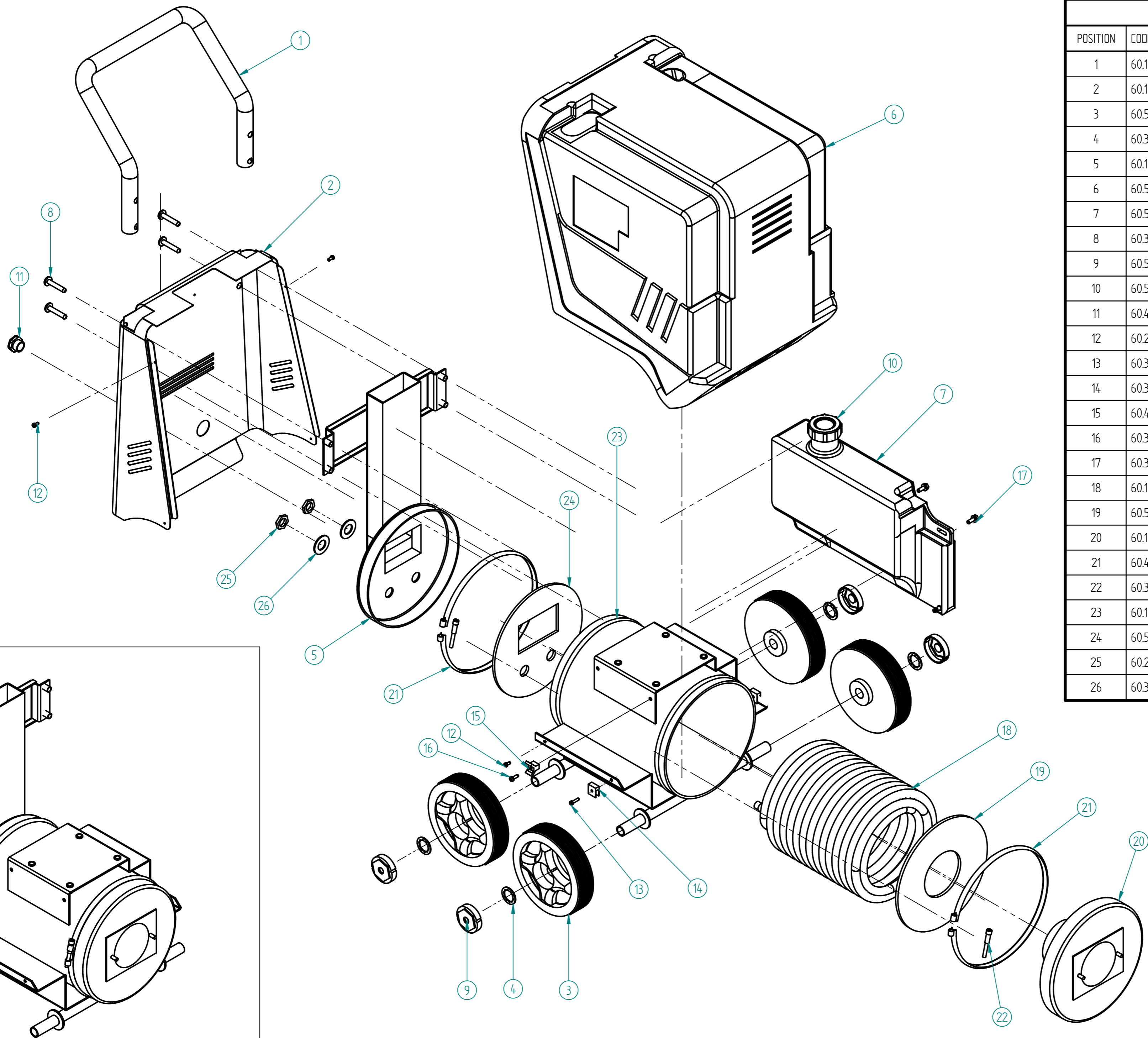
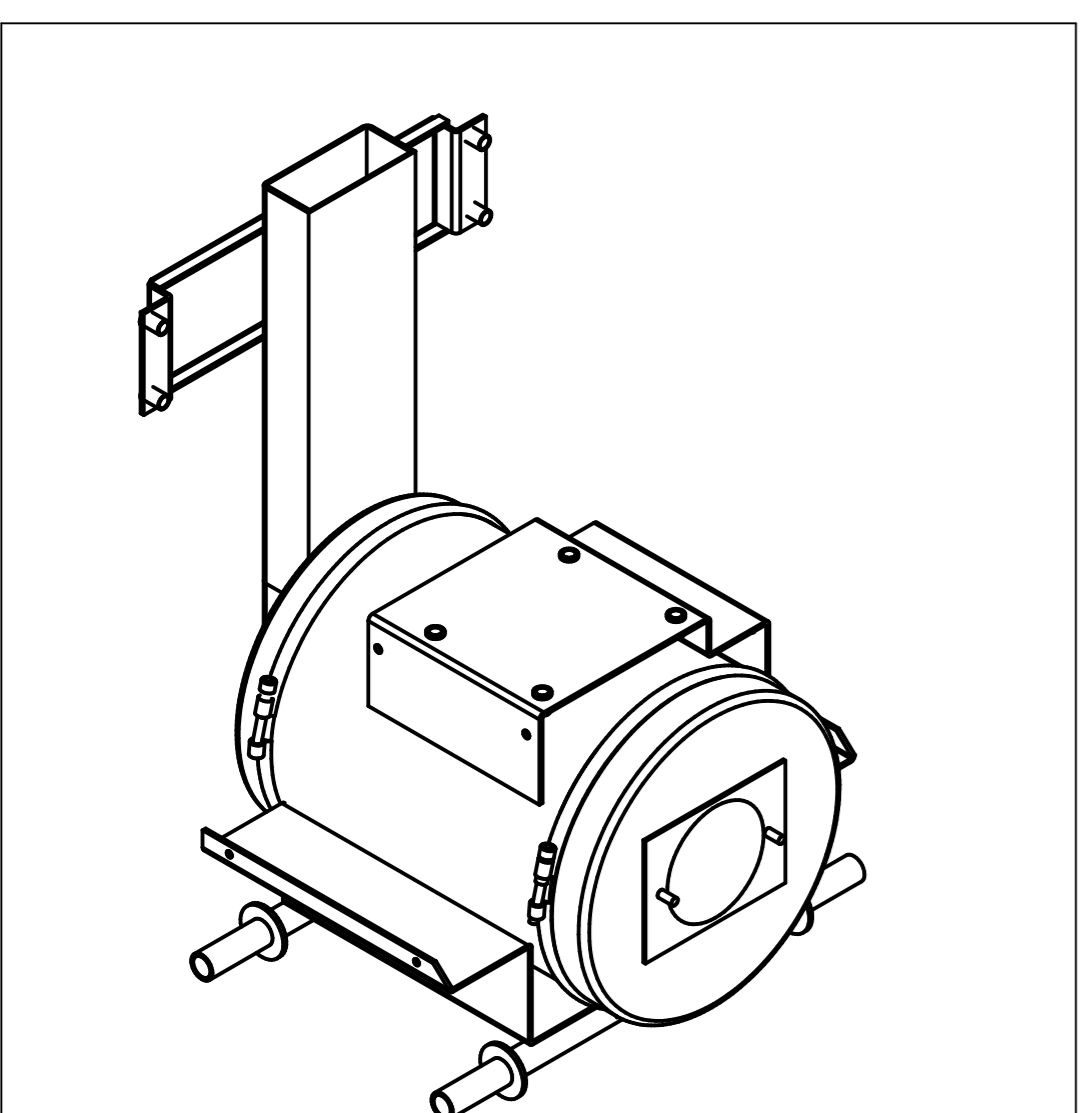


FIG.1 - FRAME AND COVER

POSITION	CODE	DESCRIPTION	QT.
1	60.15.18100	Handle Ø 30x1,5	1
2	60.15.18500	Back sheet metal panel	1
3	60.50.02800	Wheel Zeta Ø175 - Ø=20	4
4	60.30.05000	Ring StarLock Ø=20	4
5	60.15.19400	Rear boiler cap	1
6	60.55.08900	Protection cover	1
7	60.55.09400	Diesel tank	1
8	60.30.06500	Screw 8x45	4
9	60.50.02700	Plastic wheel cover (black)	4
10	60.50.04500	Fuel cap	1
11	60.40.13600	Power cord holder	1
12	60.20.01800	Self-thread screw TC 4,2x12	4
13	60.30.08400	Screw TC 4,2x19	2
14	60.30.08600	Cover holder	2
15	60.40.12600	Starting capacitor bend	1
16	60.30.08300	Self-thread screw TC 4,8x16	1
17	60.30.06600	Self-thread screw 6,2x16 with washer	2
18	60.15.19500	Coil	1
19	60.55.09100	Insulating gasket - front	1
20	60.15.19300	Front boiler cover	1
21	60.45.09300	Boiler bend	2
22	60.30.10500	Screw 6x45	2
23	60.15.19200	Boiler housing	1
24	60.55.09200	Insulating gasket	1
25	60.20.13300	Nut brass 1/2"	2
26	60.30.02000	Washer Ø20x38	2



POSIZIONE	CODICE	DESCRIZIONE	QT.
1	60.15.18300	Telaio completo assemblato	1

**FIG. 2**

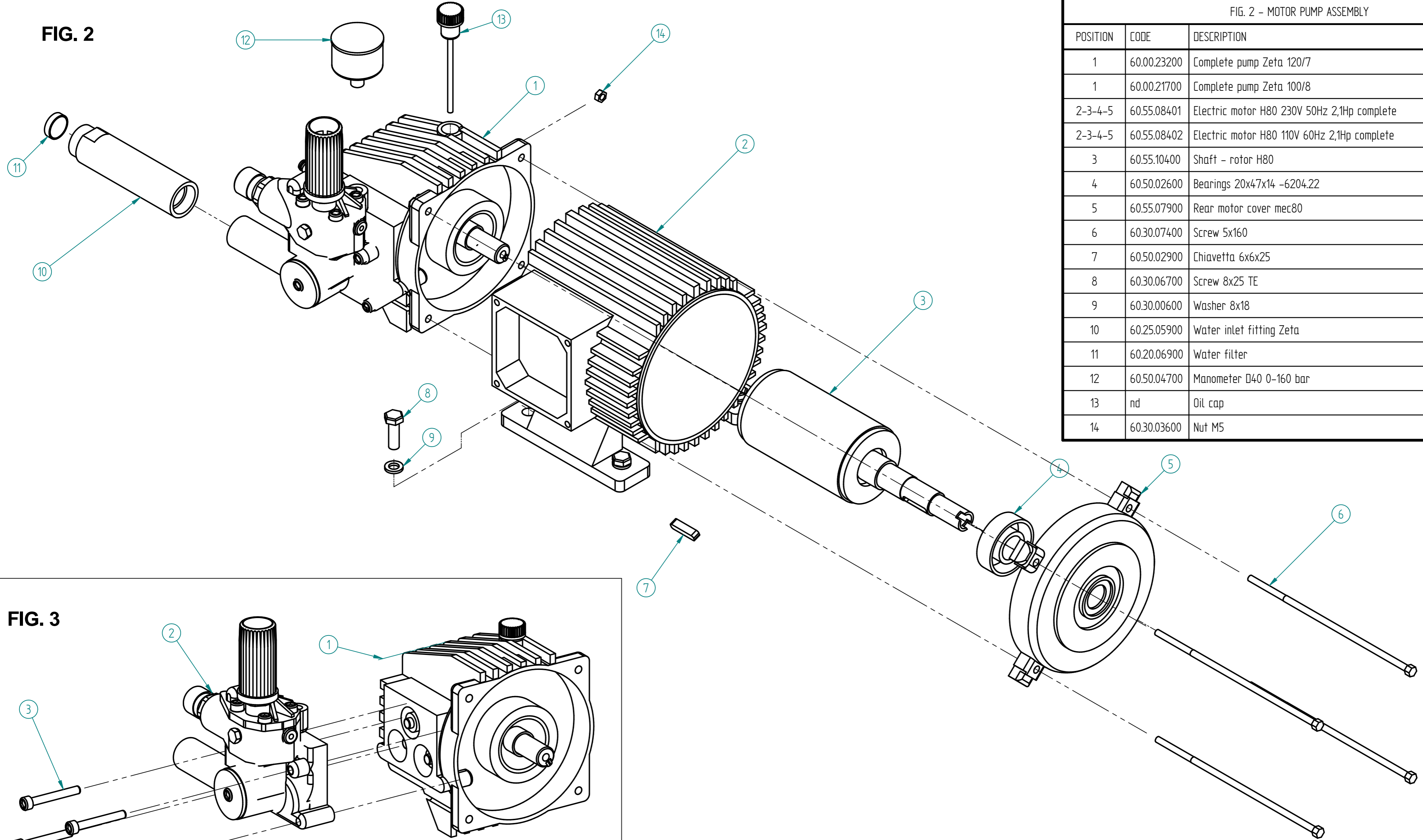
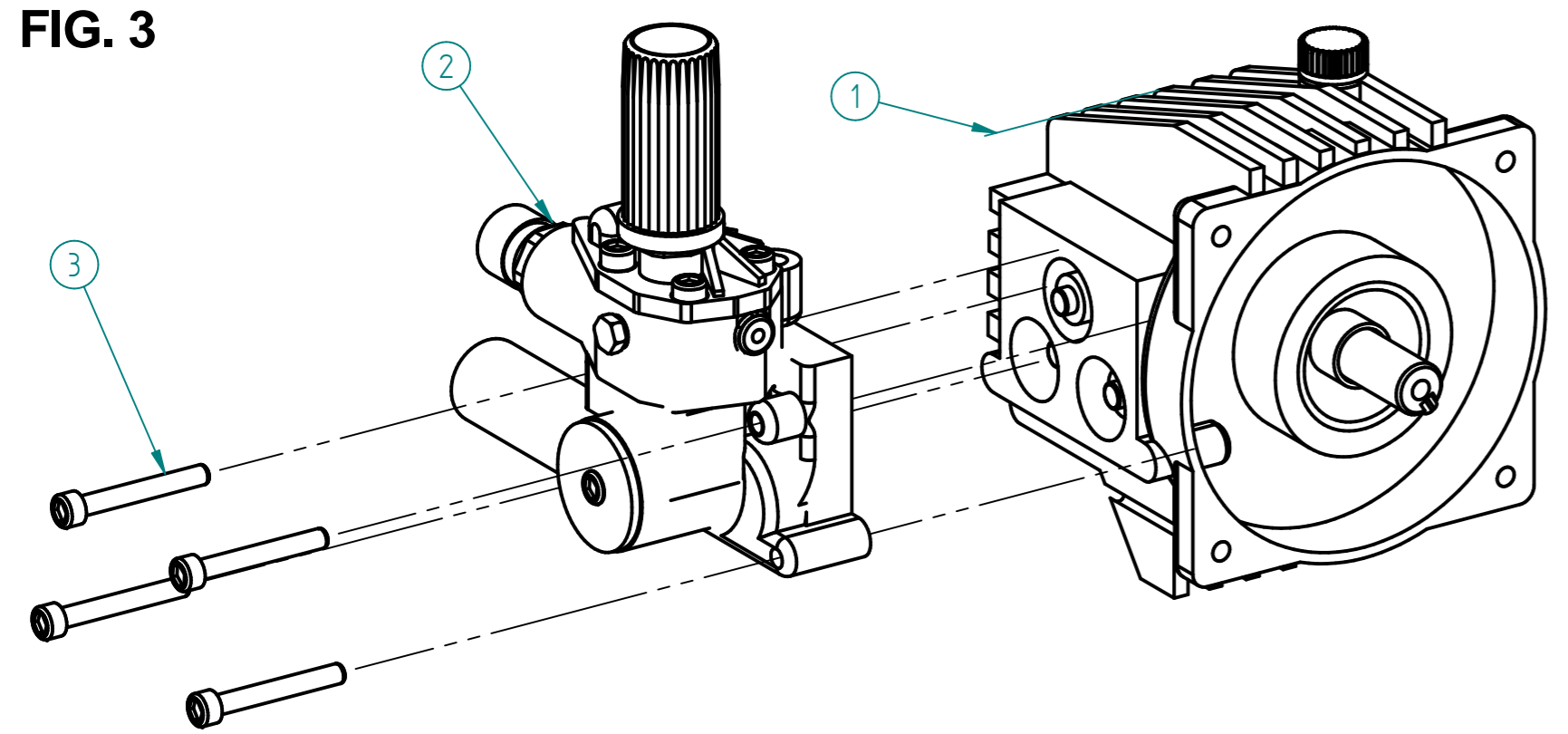


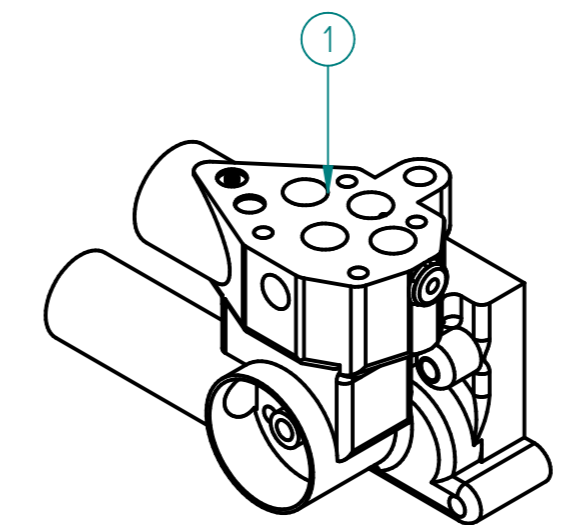
FIG. 2 - MOTOR PUMP ASSEMBLY			
POSITION	CODE	DESCRIPTION	QT.
1	60.00.23200	Complete pump Zeta 120/7	1
1	60.00.21700	Complete pump Zeta 100/8	1
2-3-4-5	60.55.08401	Electric motor H80 230V 50Hz 2,1Hp complete	1
2-3-4-5	60.55.08402	Electric motor H80 110V 60Hz 2,1Hp complete	1
3	60.55.10400	Shaft - rotor H80	1
4	60.50.02600	Bearings 20x47x14 -6204.22	1
5	60.55.07900	Rear motor cover mec80	1
6	60.30.07400	Screw 5x160	4
7	60.50.02900	Chiavetta 6x6x25	1
8	60.30.06700	Screw 8x25 TE	4
9	60.30.00600	Washer 8x18	4
10	60.25.05900	Water inlet fitting Zeta	1
11	60.20.06900	Water filter	1
12	60.50.04700	Manometer D40 0-160 bar	1
13	nd	Oil cap	1
14	60.30.03600	Nut M5	5

**FIG. 3**



POSITION	CODE	DESCRIPTION	QT.
1	60.00.21700	Complete pump Zeta 100/8	1
1	60.00.23200	Complete pump Zeta 120/8	1
2	90.29.06700	Pump-head complete	1
3	nd	Screw 6x45 TCEI	4

**FIG. 4**



POSITION	CODE	DESCRIPTION	QT.
1	90.29.06500	Head pump (with valve housing)	1

**FIG.5**

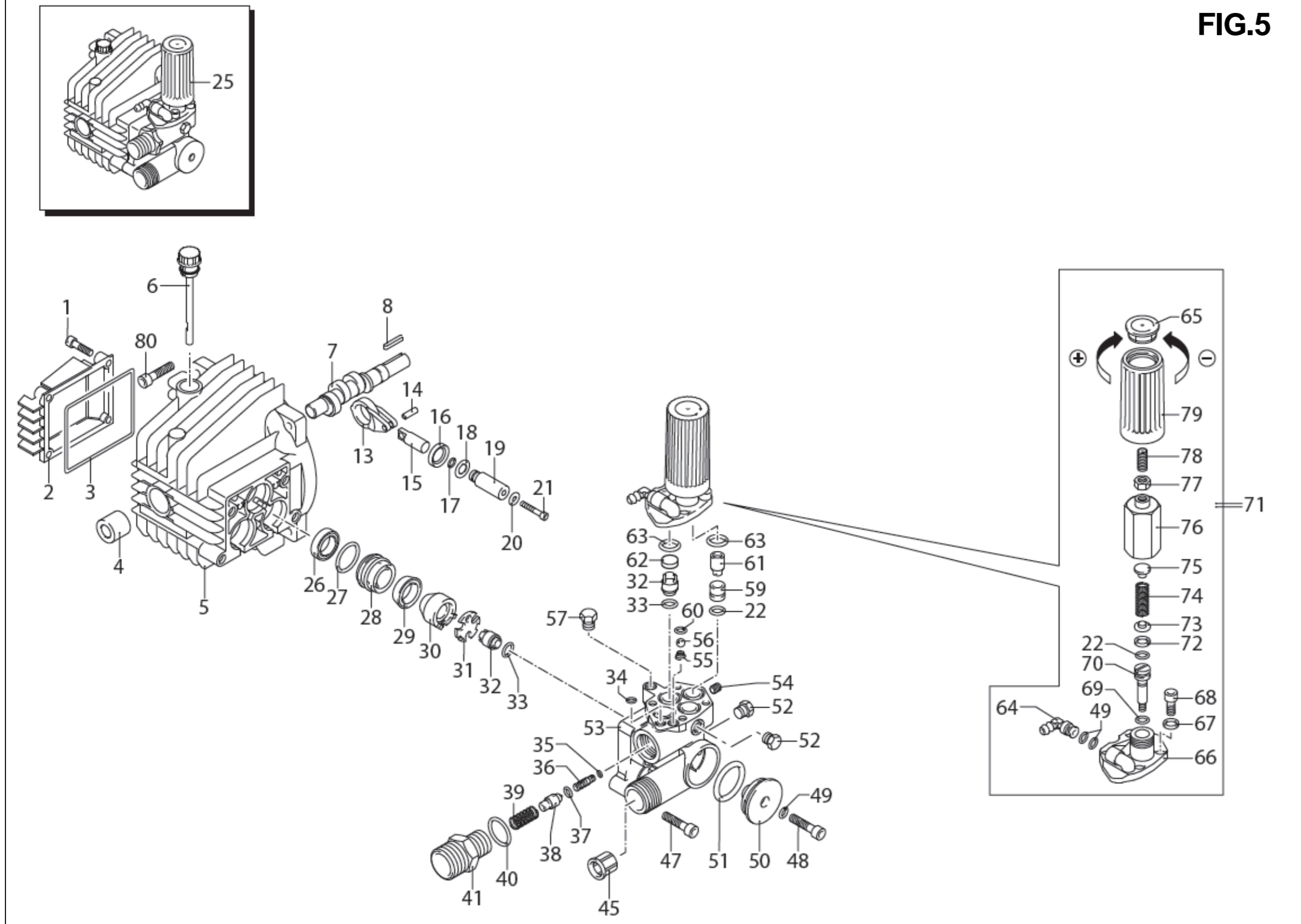


FIG. 5 - POMPA HPV 8.11 (20463) - 230V/50Hz 2800rpm POMPA HPV 11.07 (9253) - 230V/50Hz 2800rpm				FIG. 5 - POMPA HPV 8.11 (20463) - 230V/50Hz 2800rpm POMPA HPV 11.07 (9253) - 230V/50Hz 2800rpm			
POS	CODE	DESCRIPTION	QT	POS	CODE	DESCRIPTION	QT
1	1260780	Screw TCEI M5x25	4	39	1540140	Spring	1
2	1344060	Cover	1	40	880270	OR $\phi$ 17,17x1,78	1
3	1040710	Gasket OR $\phi$ 56x2	1	41	1342690	Fitting 3/8"G(M)-M22x1,5(M)	1
4	1260050	Boccola	1	45	1340260	Filter	1
5	1344050	Pump body	1	47	881470	Screw TCEI M6x45	4
6	1340050	Cap	1	48	680700	Screw TCEI M6x20	1
7	1340170	Shaft 1 HPV 8.11	1	49	480480	Gasket OR $\phi$ 4,48x1,78	3
7	1341490	Shaft 3 HPV 11.07	1	50	1340190	Cover	1
8	880111	Linguetta	1	51	780050	Gasket OR $\phi$ 28,25x1,78	1
9	1341070	Bearings	1	52	620301	Cap 1/8" G	2
10	480890	Anello seeger $\phi$ e 17	1	53	1342670	Head	1
11	111120	Anello seeger $\phi$ i 47	1	54	851100	Screw M5x5	1
12	1341080	Anello tenuta	1	55	1250270	Spring	1
13	1340060	Crank	3	56	1250280	Ball	1
14	1340080	Spina	3	57	620301	Tappo 1/8" G	1
15	1340070	Piston guide	3	59	1342700	Housing	1
16	1260460	Oil seals	3	60	1460430	OR $\phi$ 4x2,5	1
17	600180	OR $\phi$ 7,66x1,78	3	61	11460150	Piston	1
18	1341010	Disc	3	62	1343810	Pastiglia	3
19	1342740	Piston $\phi$ 15	3	63	740290	Guarnizione OR $\phi$ 14x1,78	5
20	1341020	Washer	3	64	1260670	Fitting	1
21	850670	Screw TCEI M6x35	3	65	1981770	Cap	1
22	600180	OR $\phi$ 7,66x1,78	2	66	1342680	Cover	1
25	1349234	Pump assembly HPV 8.11	1	67	1381550	Washer	4
25	1349256	Pump assembly HPV 11.07	3	68	1343510	Screw TCEI M6x14	4
26	1260440	Water seals $\phi$ 15	3	69	1080190	OR $\phi$ 2,90x1,78	1
27	770260	OR $\phi$ 23,52x1,78	3	70	2021900	Piston	1
28	1342730	Piston guide $\phi$ 15	3	71	2668	Regulation valve kit	1
29	1342760	Water seals	3	72	1080401	Ring	1
30	1342720	Ring $\phi$ 15	3	73	1343450	Piattello	1
31	1342750	Disc	3	74	1460190	Spring	1
32	1349053	Valve	6	75	1343000	Piattello	1
33	800560	OR $\phi$ 8,73x1,78	6	76	1980640	Insert	1
34	390341	OR $\phi$ 5x2	1	77	1060120	Nut M6	1
35	1343110	OR $\phi$ 4x1,1 optional	1	78	392840	Screw M6x16	1
36	1342710	Nozzle HPV 8.11	1				
36	1343550	Nozzle HPV 11.07	1				
37	1460430	Guarnizione OR $\phi$ 4x2,5	1				
38	1460260	Piston	1				

**FIG. 6**

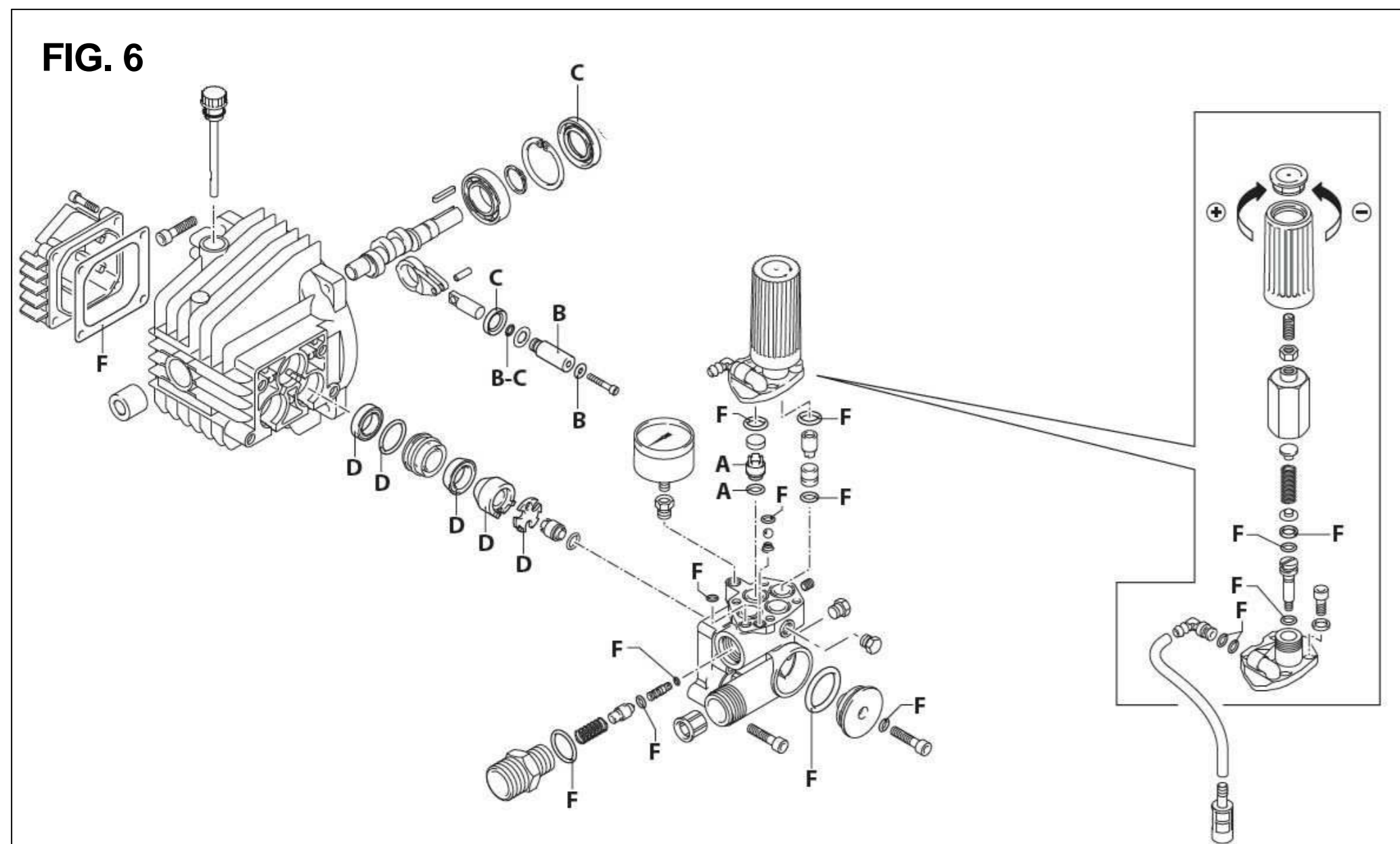


FIG. 6 - SPARE PARTS FOR PUMP				
KIT NR.	A= KIT 1880 Valves	B=KIT 2623 $\phi$ 15 Pistons	C=KIT 1876 Oil seals	D=KIT 2624 $\phi$ 15 Water seals
Positions	32-33	17-19-20	3-12-16-17	26-27-29-30-31
Number	6-6	3-3-3	1-1-3-3	3-3-3-3-3

**FIG. 7**

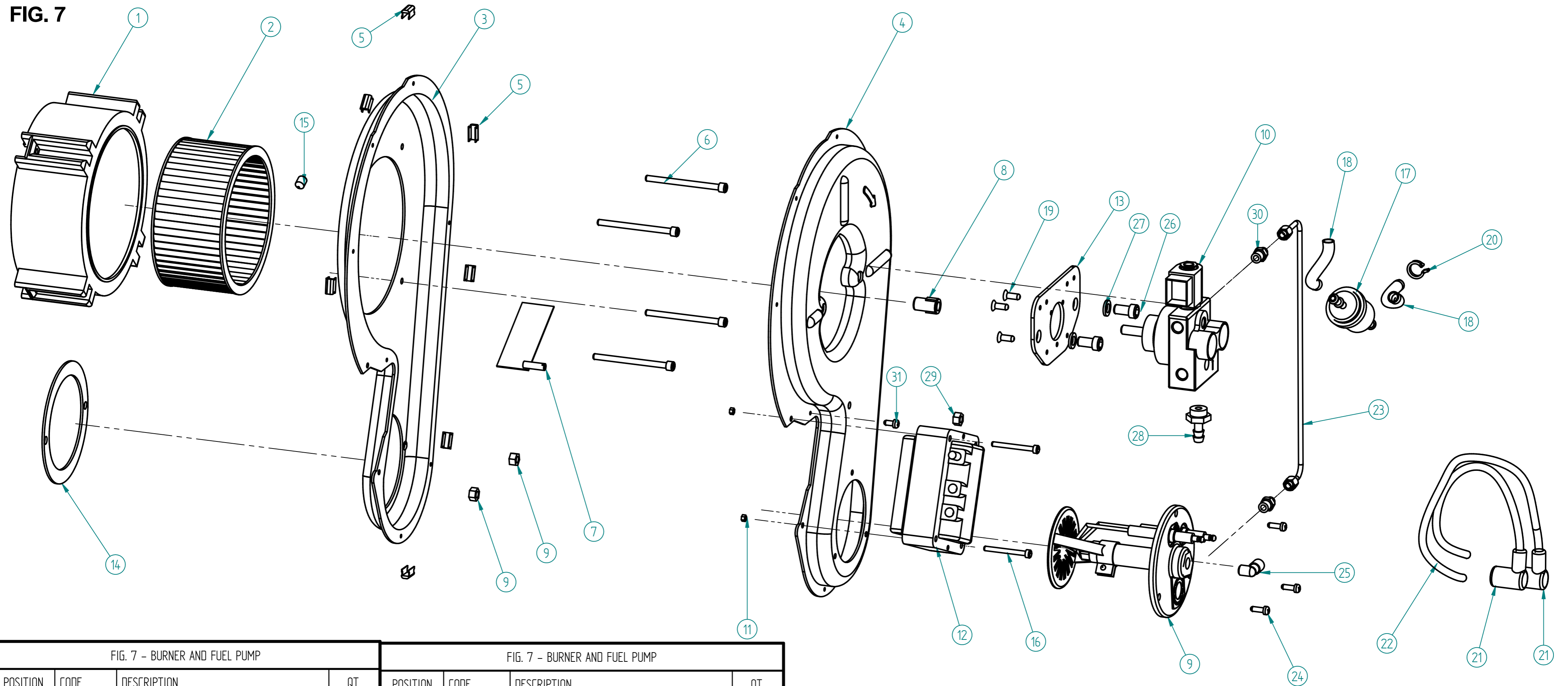
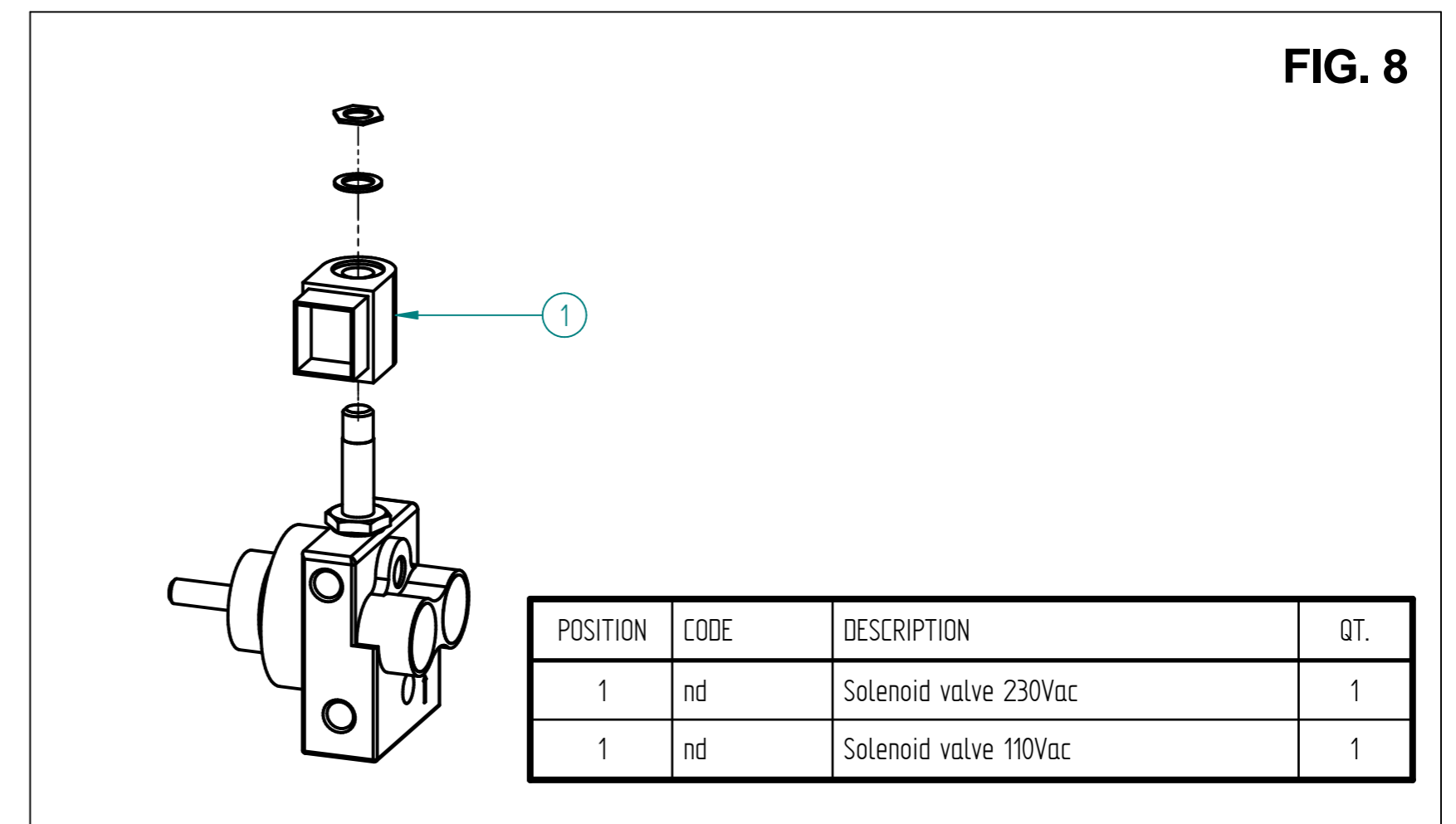


FIG. 7 - BURNER AND FUEL PUMP			
POSITION	CODE	DESCRIPTION	QT.
1	60.55.080	Alluminium body H80	1
2	60.50.025	Fan Ø133x65 H19 ZETA	1
3	60.15.178	Fan housing rear	1
4	60.15.179	Fan housing front	1
5	60.30.077	Fastener	7
6	60.30.073	Screw 5x73	4
7	60.15.198	Air flap	1
8	60.55.044	Plastic fuel pump coumpling	1
9	60.55.151	Combustion head complete assembly	1
10	60.00.141	Fuel pump complete with solenoid valve	1
11	60.30.038	Nut 4	2
12	60.40.108	Ignition transformer 230Vac	1
12	60.40.050	Ignition transformer 110 Vac	1
13	60.15.175	Fuel pump sheet metal support	1
14	60.55.087	Gasket thikness 2mm	1
15	60.30.075	Fan srew M8x6	1

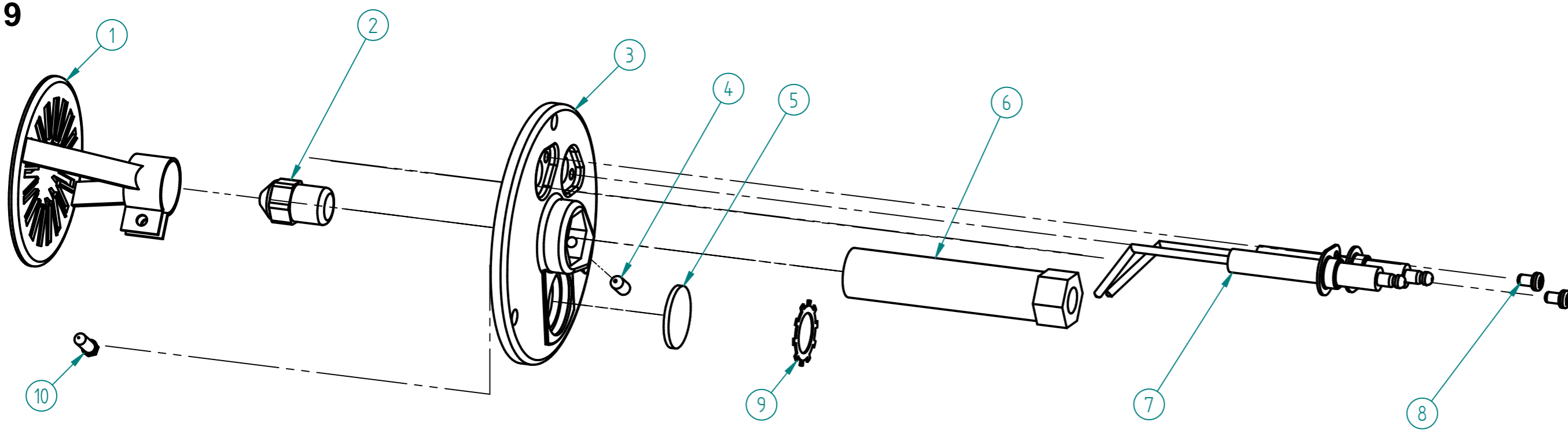
FIG. 7 - BURNER AND FUEL PUMP			
POSITION	CODE	DESCRIPTION	QT.
16	60.30.057	Screw 4x40	2
17	60.50.051	Plastic fuel filter	1
18	60.20.04701	Fuel rubber hose	cm10
19	60.30.081	Screw 5x12	3
20	60.20.23700	Spring Ø15	1
21	60.50.035	Electrode protection cover	2
22	60.40.103	Cable for high voltage ignition	cm25
23	60.25.006	Fuel copper hose mounted with nut and ogive	cm40
24	60.30.080	Screw 3,9x13	3
25	60.20.182	Elbow 1-8M-1/8F	1
26	60.30.021	Screw 8x16	2
27	60.30.006	Washer 8x18	2
28	60.20.053	Fitting hose holder 1/4M	1
29	60.30.011	Nut M6	1
30	60.20.003	Fitting 1/8" m for ogive Ø4	2
31	60.30.079	Screw 3,9x9,95	1

**FIG. 8**



POSITION	CODE	DESCRIPTION	QT.
1	nd	Solenoid valve 230Vac	1
1	nd	Solenoid valve 110Vac	1

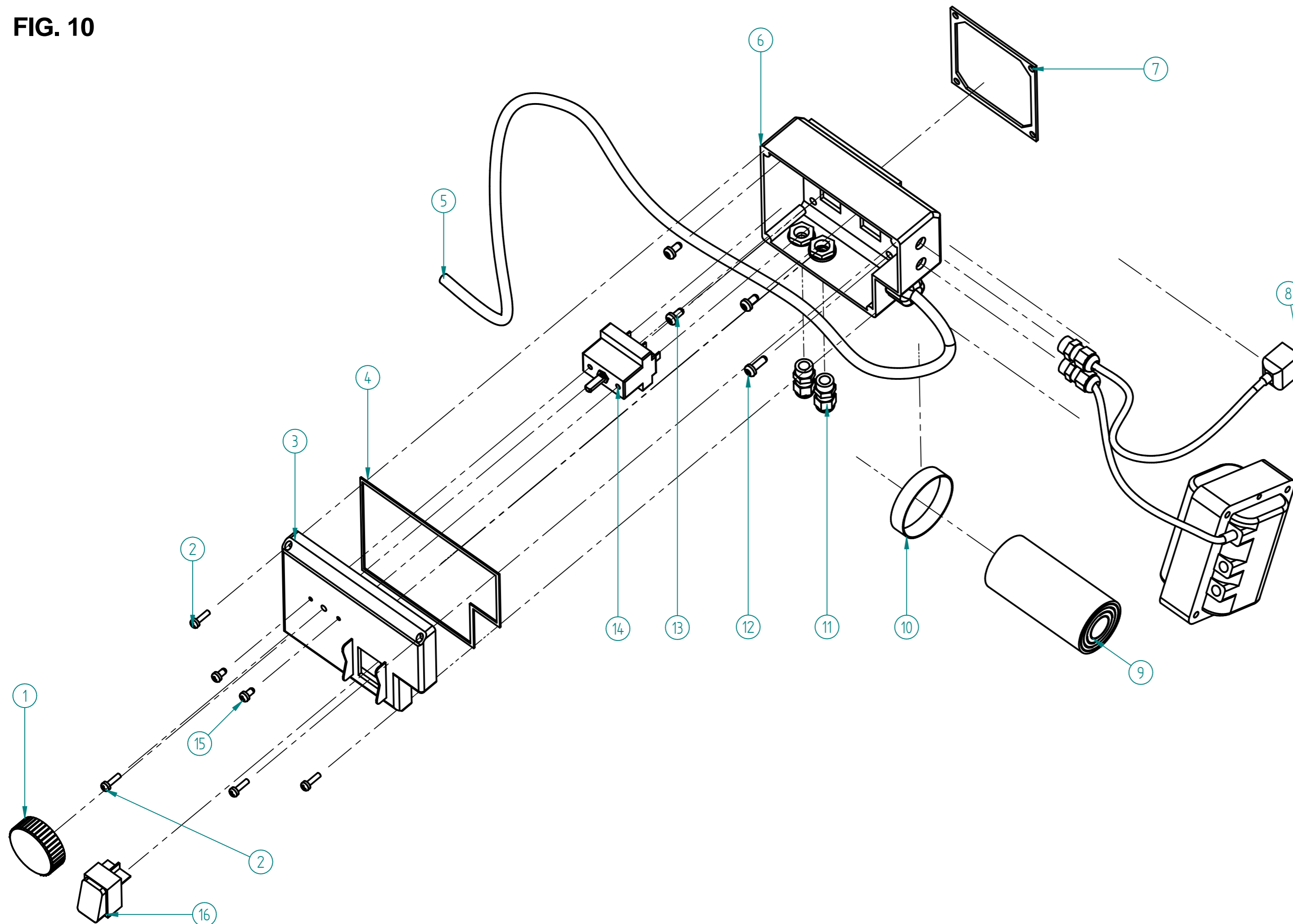
**FIG. 9**



**FIG. 9 - COMBUSTION HEAD**

POSITION	CODE	DESCRIPTION	QT.
1	60.15.182	Combustion deflector	1
2	60.50.031	Diesel nozzle 0.65GPH - 60°	1
3	60.55.022	Combustion head support	1
4	60.30.037	Screw 5x10	1
5	60.55.029	Inspection glass	1
6	60.25.036	Diesel nozzle brass support	1
7	60.55.088	Ignition electrode	2
8	60.30.007	Screw	2
9	60.30.009	Seger ring Ø24	3
10	nd	Screw	1

**FIG. 10**



**FIG. 10 - ELECTRIC BOX**

POSITION	CODE	DESCRIPTION	QT.
1	60.40.12700	Thermostat knob	1
1	nd	Thermostat knob 0-150° (VERS. STEAM)	1
2	60.30.08200	Screw 3,5x13	4
3	60.55.08600	Plastic cover for electric box	1
4	60.40.13400	Gasket	1
5	60.40.13900	Power cord 3x1.5mm <sup>2</sup>	5,5 mt
6	60.55.08500	Electric box	1
7	60.40.13300	Gasket	1
8	60.40.20500	Solenoid valve connector with cable L700	1
9	60.40.12500	Starting capacitor 40microF - 450V	1
10	60.40.12300	Capacitor bend 9x235	1
11	60.40.13200	Cable holder PG7	4
12	60.30.08300	Screw 4,8x16	1
13	60.30.07600	Screw 4,8x9,5	3
14	60.40.12400	Thermostat 0-90° Zeta	1
14	60.40.03000	Thermostat 0-150° Zeta (VERS. STEAM)	1
15	60.30.00700	Screw 4x8	2
16	60.40.07200	Main switch 0-1 16A	1
16	60.40.16001	Main switch 0-1 thermic 20A	1

**WIRING**

POSITION	CODE	DESCRIPTION	QT.
nd	40.06500	Faston connector	4
nd	40.00400	Faston blue	1
nd	40.00600	Faston connector blue F	5
nd	40.01100	Terminale faston blu F	4
nd	40.01600	Terminale faston rosso M-F	5
nd	40.12800	Terminale faston rosso preisolato	4

**FIG. 11**

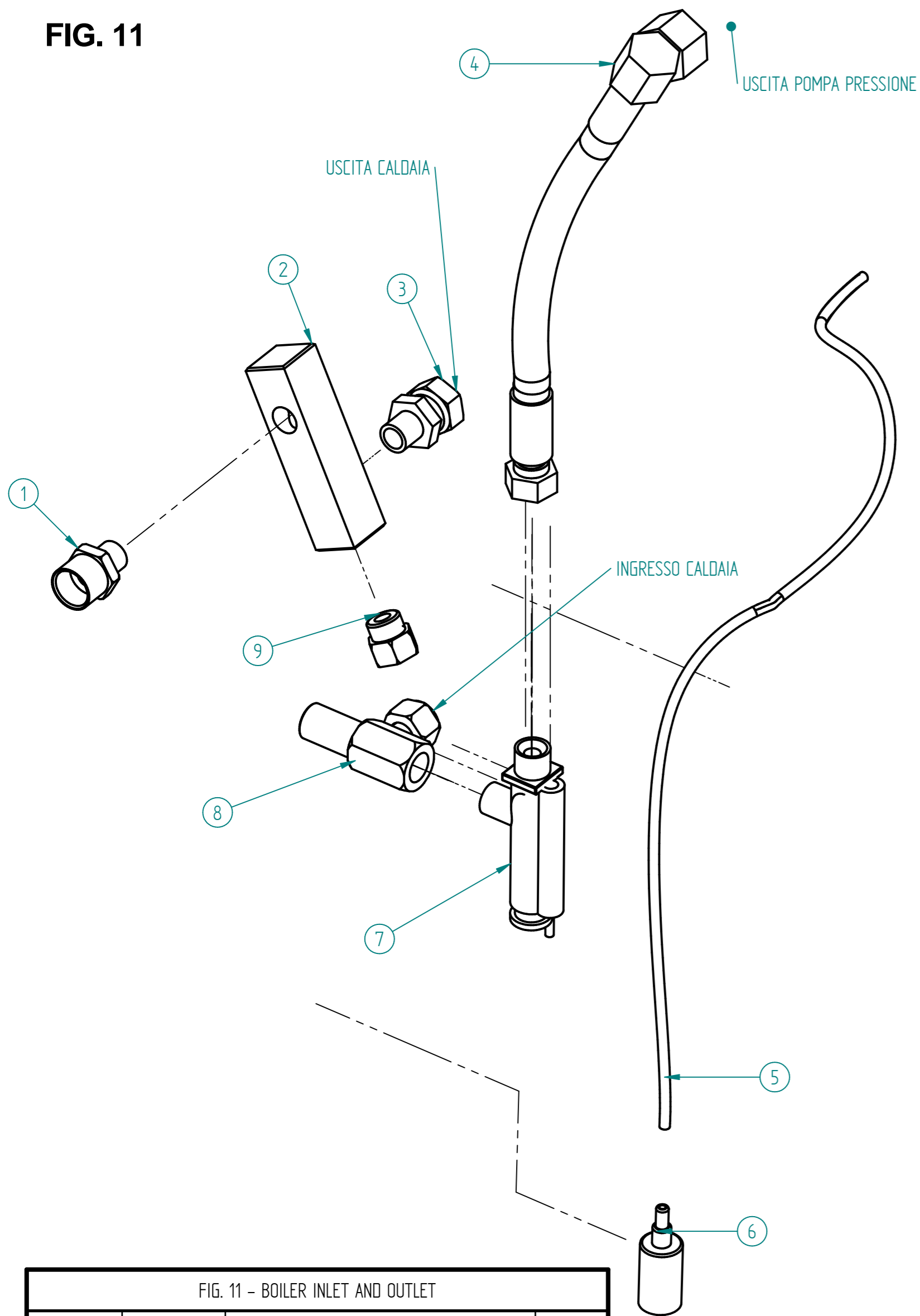


FIG. 11 - BOILER INLET AND OUTLET			
POSITION	CODE	DESCRIPTION	QT.
1	60.25.04800	Outlet fitting M22x1,5 - 3/8M	1
2	60.25.04600	Thermostat fitting brass body	1
3	60.25.04500	Nipple 3/8 M	1
4	60.25.04400	Hose 5/16 R1 - 3/8F - 90°	1
5	60.20.01100	Detergent rubber hose d6x12,5	1,5 mt
6	60.20.02500	Detergent filter (without valve)	1
7	60.00.16800	Flow switch complete (plastic piston)	1
8	60.25.15100	Safety valve assembly	1
9	60.25.12000	Fitting for thermostat	1

**FIG. 12**

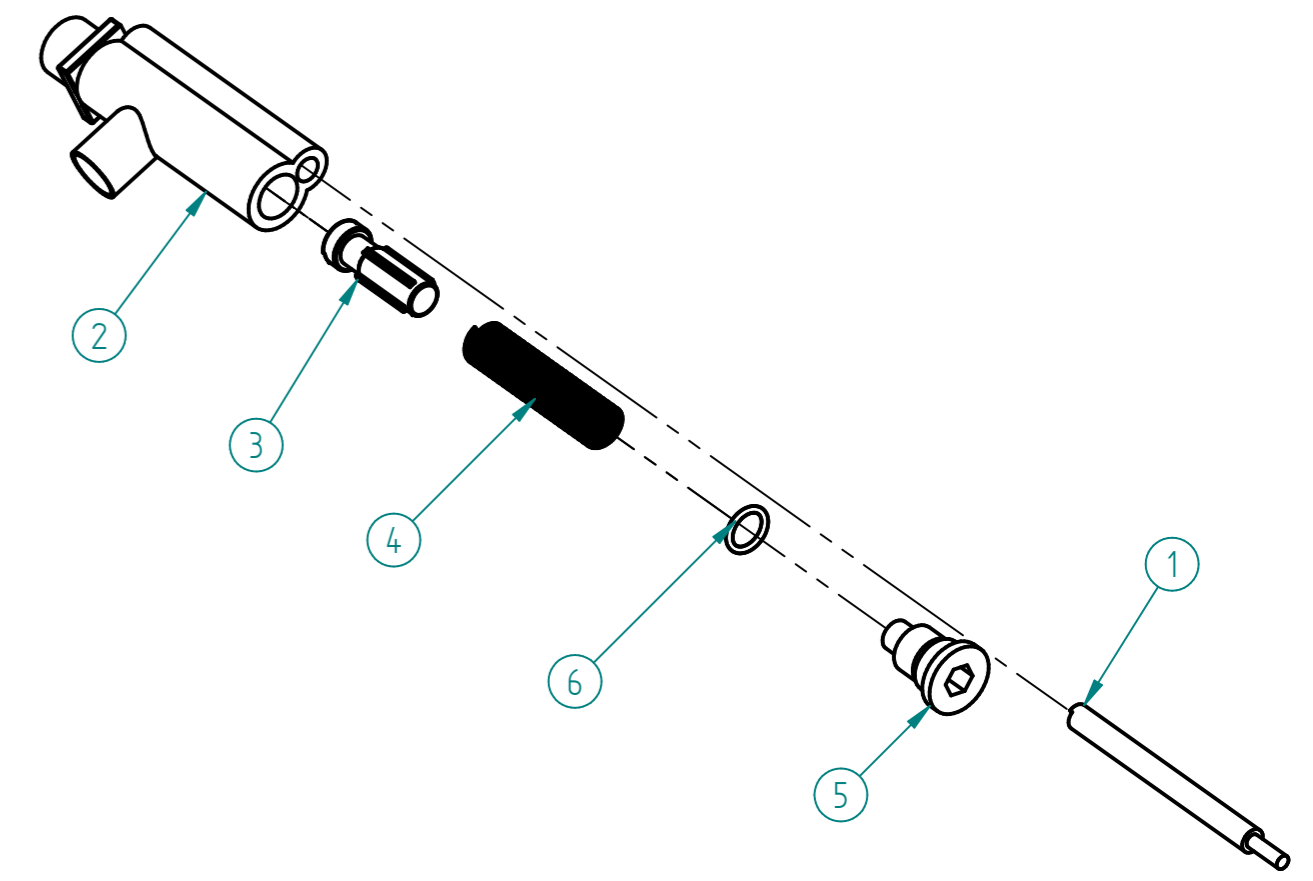


FIG. 12 - 28.0500.10 FL3 Flow switch G3/8MM - 28.0540.10 FL3-2 Flow switch G3/8MM brass piston				
POSITION	CODE	DESCRIPTION	QT.	Qt. min.
1	28.0518.23	Sensor 3A +cable 1250 mm	1	5
2	28.0501.35	Flow switch brass body G3/8M-Gc3/8M	1	3
2	28.0531.35	Flow switch brass body G3/8M-Gc3/8M (1)	1	3
3	28.0502.23	Piston plastic. POM	1	5
3	28.0508.23	Piston brass (2)	1	5
4	28.0505.51	Spring 0,7x11,7x52 mm inox	1	5
5	28.0517.31	Cap M14x1 ott.	1	5
6	10.3059.01	OR 1,78x11,11 mm Ni 85	1	10

THREADSEALANT		
POSITION	CODE	DESCRIPTION
A	60.00.13503	LOXEAL 84-90 / F400 (Green - Strong)
B	60.00.13501	LOXEAL 83-14 / M500 (Red - Weak)
C	60.00.19501	TEFLON LIQUID

**FIG. 13**

FIG. 13 - SAFETY VALVE ASSEMBLY			
POSITION	CODE	DESCRIPTION	QT.
1	60.25.14600	Fitting 12x1,5 - 3/8	1
2	60.25.14700	Nut 3/8	1
3	60.25.14500	Safety valve body brass	1
4	60.25.09500	Ball Ø 5,54	1
5	60.25.10800	Washer	1
6	60.25.09400	Spring 2,3x10,3x21,6	1
7	60.25.09600	Fitting brass	1
8	60.25.14800	Fitting brass	1

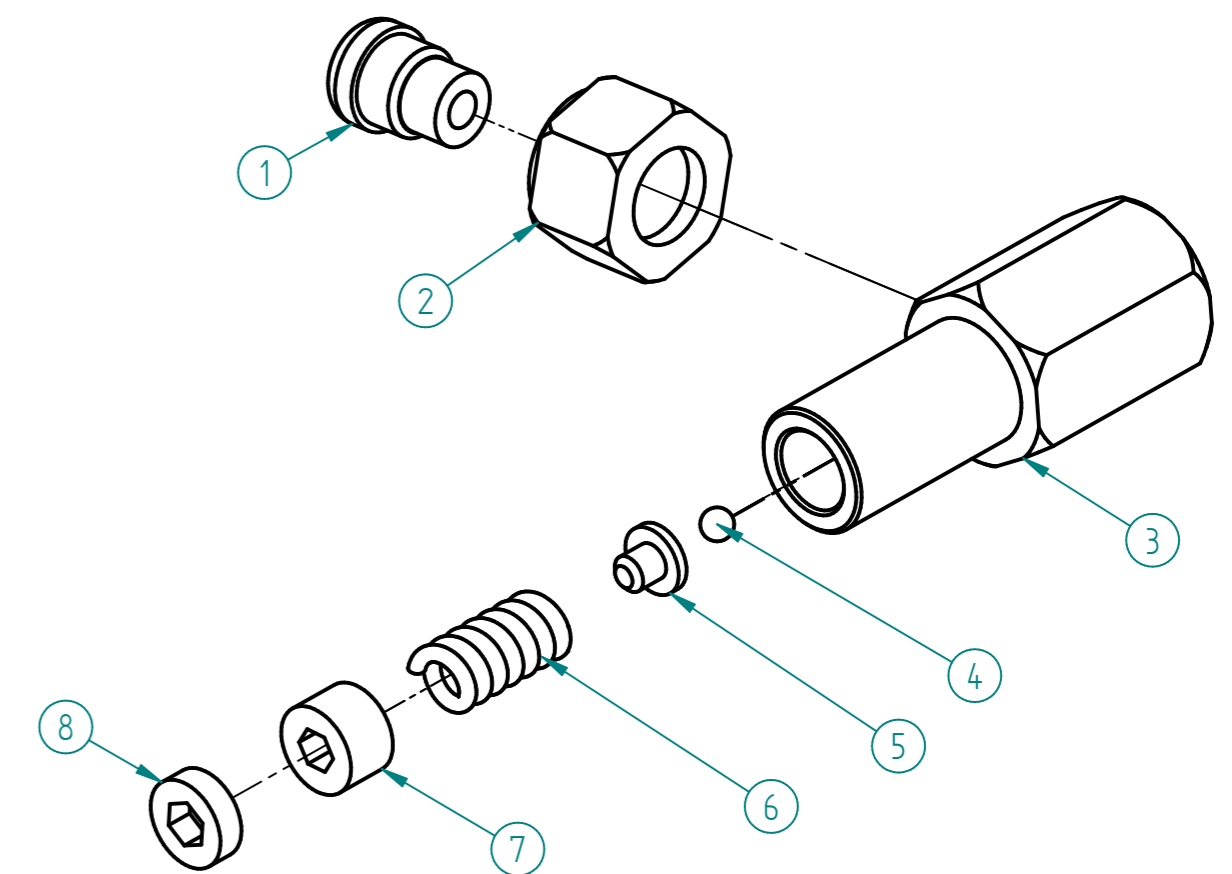


FIG. 14

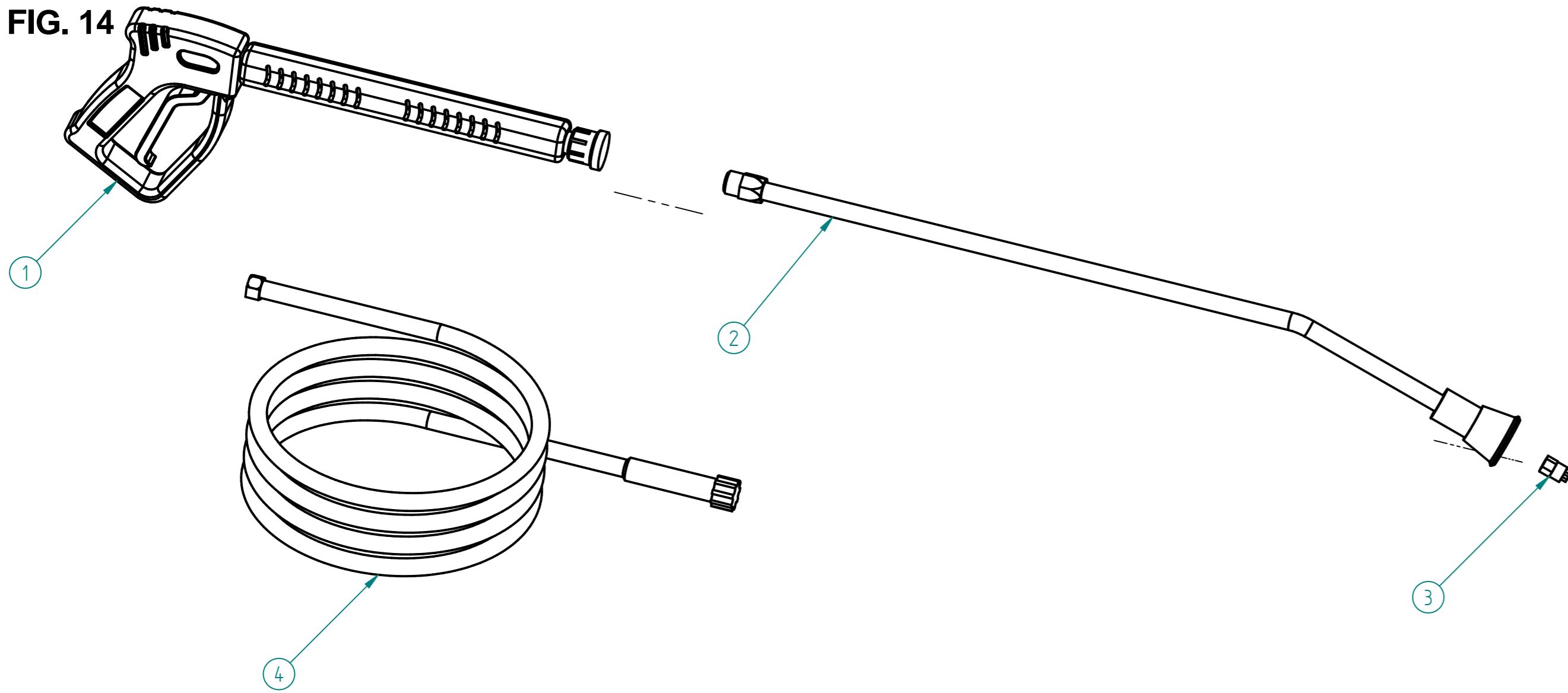


FIG. 14 - ACCESSORIES FOR ZETA STANDARD			
POSITION	CODE	DESCRIPTION	QT.
1	60.00.01700	Trigger gun with handle	1
2	60.00.30500	Lance with regulation head	1
3	60.00.07714	High pressure nozzle 45025	1
3	60.00.07706	High pressure nozzle 45035	1
4	60.00.17200	High pressure hose 8mt 5/16 R1	1

THREADSEALANT		
POSITION	CODE	DESCRIPTION
A	60.00.13503	LOXEAL 84-90 / F400 (Green - Strong)
B	60.00.13501	LOXEAL 83-14 / M500 (Red - Weak)
C	60.00.19501	TEFLON LIQUID

FIG. 15

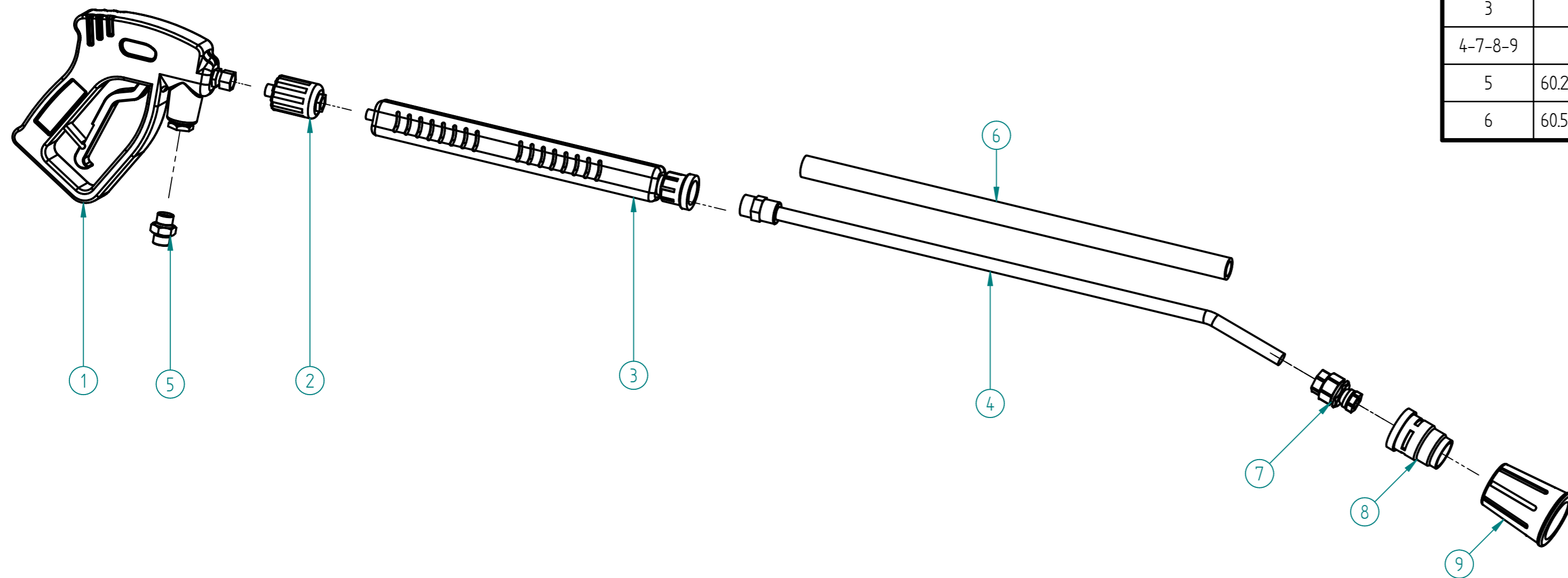


FIG. 15 - ACCESSORIES FOR ZETA STEAM			
POSITION	CODE	DESCRIPTION	QT.
1	60.00.40700	Trigger gun RL22	1
2	60.00.35500	Flow regulator 1-4 f-m	1
3		Handle L350 with M22 fitting	1
4-7-8-9		Lance with m22 and regulation head complete	1
5	60.20.04900	Nipple 3-8 m-m	1
6	60.55.26100	Silicon protection hose d15	cm 50